

THE BIGGER PICTURE



Port of Felixstowe

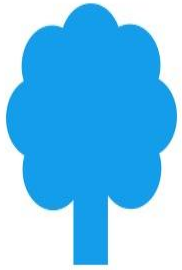
BETTER

FOR THE

ENVIRONMENT

REDUCING OUR FOOTPRINT

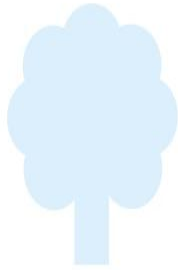
REDUCING OUR FOOTPRINT



12.5%

REDUCED EMISSIONS

Less CO₂e since 2007



30%

EVEN LESS ONGOING

Less CO₂e by 2017 through our 5 year Energy Plan



32%

BETTER AIR QUALITY

better NO₂ levels since 2007



70%

BETTER AIR QUALITY

better SO₂ levels since 2009

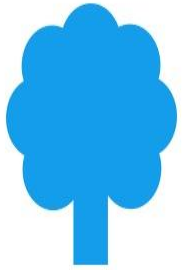


70%

REDUCING WASTE

of waste is now recycled 5th best in the world

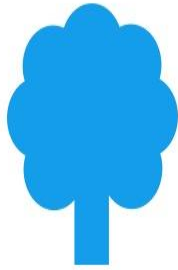
REDUCING OUR FOOTPRINT



12.5%

REDUCED EMISSIONS

Less CO₂e since 2007



30%

EVEN LESS ONGOING

Less CO₂e by 2017 through our 5 year Energy Plan



32%

BETTER AIR QUALITY

better NO₂ levels since 2007



70%

BETTER AIR QUALITY

better SO₂ levels since 2009

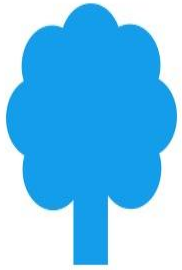


70%

REDUCING WASTE

of waste is now recycled
5th best in the world

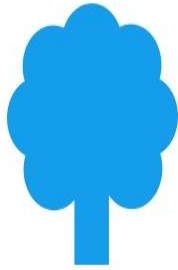
REDUCING OUR FOOTPRINT



12.5%

REDUCED EMISSIONS

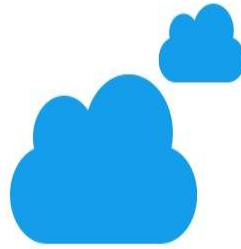
Less CO₂e since 2007



30%

EVEN LESS ONGOING

Less CO₂e by 2017 through our 5 year Energy Plan



32%

BETTER AIR QUALITY

better NO₂ levels since 2007



70%

BETTER AIR QUALITY

better SO₂ levels since 2009

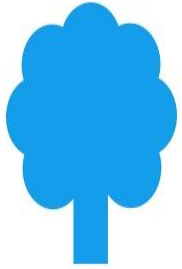


70%

REDUCING WASTE

of waste is now recycled
5th best in the world

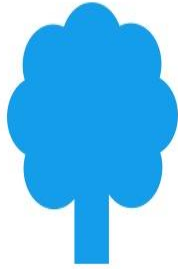
REDUCING OUR FOOTPRINT



12.5%

REDUCED EMISSIONS

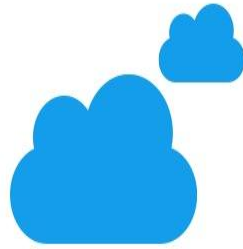
Less CO₂e since 2007



30%

EVEN LESS ONGOING

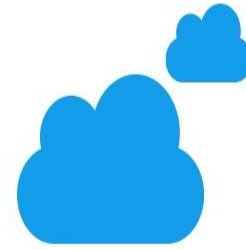
Less CO₂e by 2017 through our 5 year Energy Plan



32%

BETTER AIR QUALITY

better NO₂ levels since 2007



70%

BETTER AIR QUALITY

better SO₂ levels since 2009

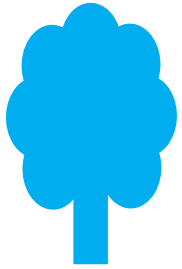


70%

REDUCING WASTE

of waste is now recycled
5th best in the world

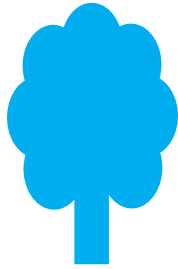
REDUCING OUR FOOTPRINT



12.5%

REDUCED EMISSIONS

Less CO₂e since 2007



30%

EVEN LESS ONGOING

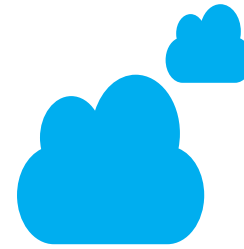
Less CO₂e by 2017 through our 5 year Energy Plan



32%

BETTER AIR QUALITY

better NO₂ levels since 2007



70%

BETTER AIR QUALITY

better SO₂ levels since 2009



70%

REDUCING WASTE

of waste is now recycled
5th best in the world



Landguard
Peninsula

The Harbour & Trimley
Marshes Nature Reserve

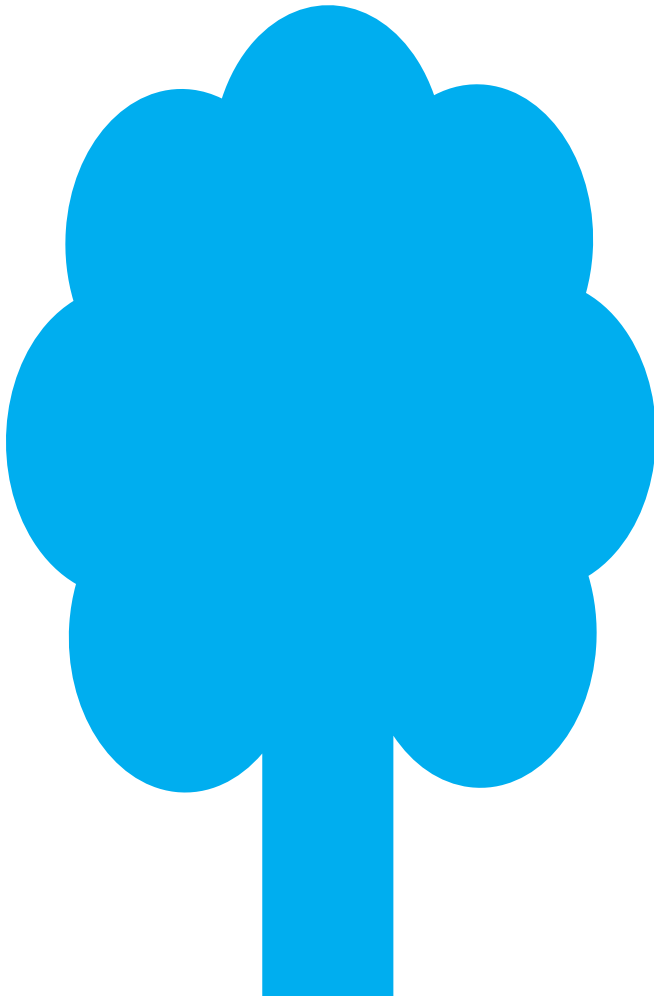
**ENHANCING OUR
ENVIRONMENT AND
BIODIVERSITY**

**REDUCING THE FOOTPRINT OF OUR
INDUSTRY OVERALL**

INVESTMENT THAT **PAYS OFF**

200%

**In 2011 we negated our Total
CO2e footprint twice over
through use of rail and feeders
instead of road**



**PORT OF
FELIXSTOWE
THE PORT OF
BRITAIN**